

Introduction of tele-ultrasonography on the island of Belle Isle Feedback June 2016



Operational structure of the facility

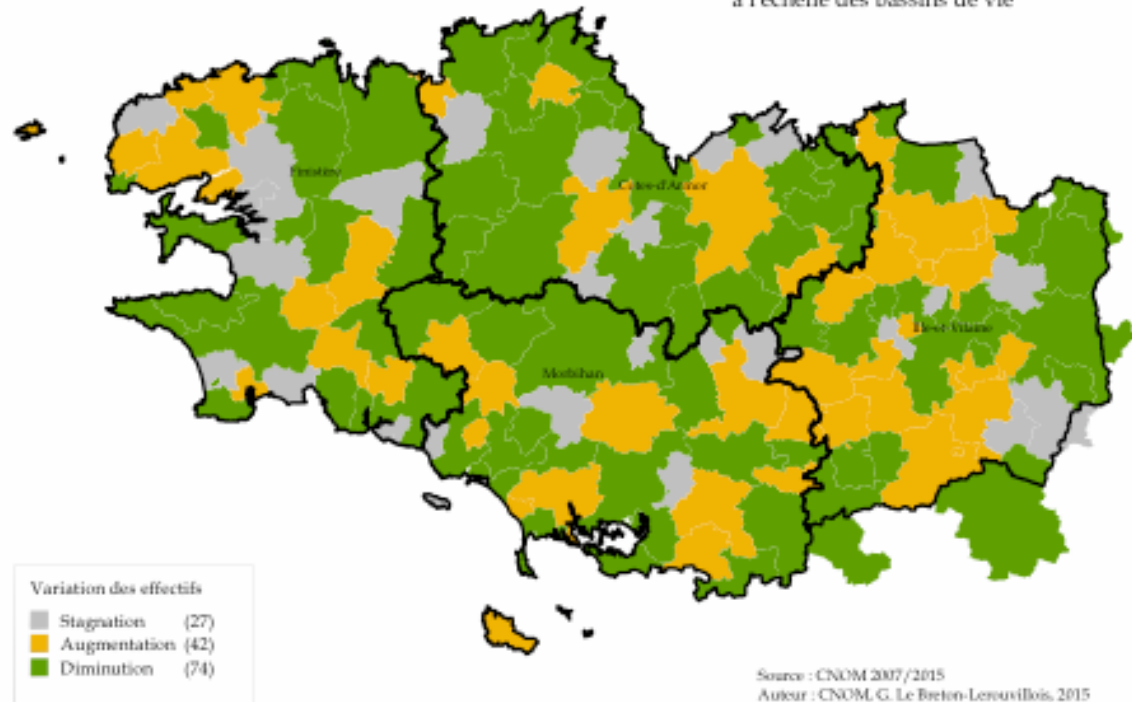
- Licensed capacity

- 12 beds in medical unit
- 15 beds for follow-up and rehabilitation care
- 15 beds for long-term care
- 72 spaces for nursing home care (permanent lodging)
- 41 spaces for home health services (6 of which on the island of Hoëdic)
- 66 spaces for adults with severe physical or mental disabilities

- Additional services

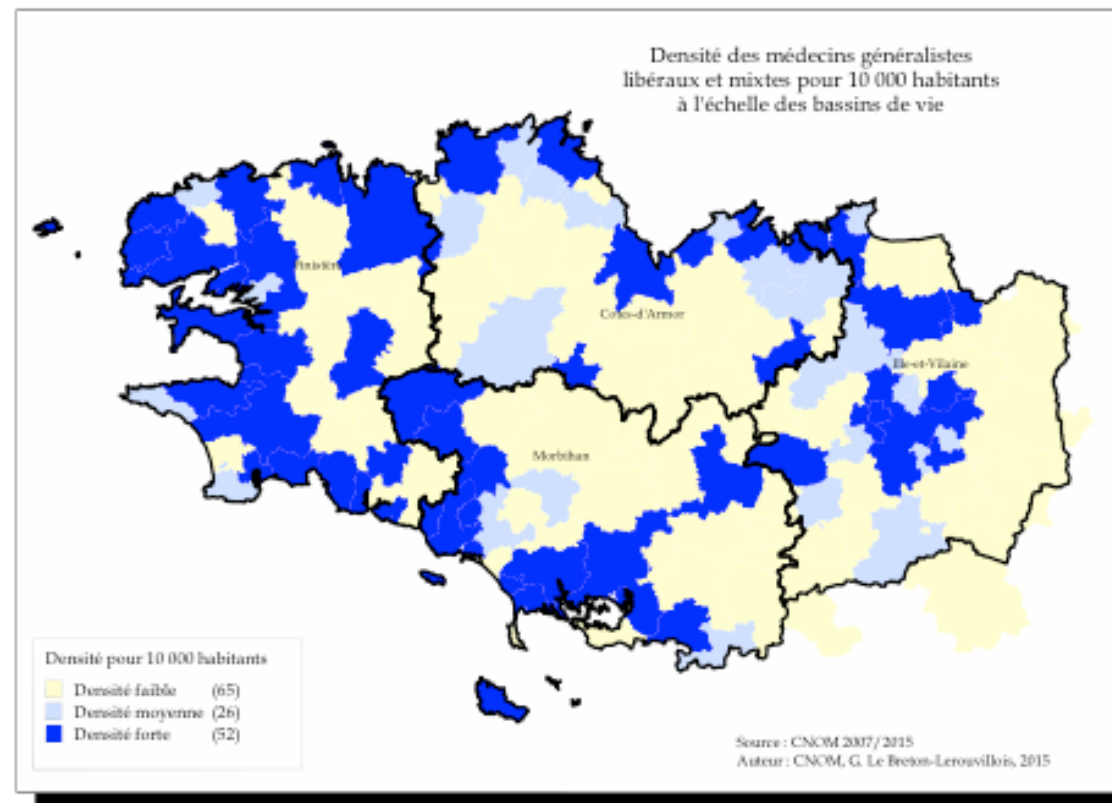
4 spaces for renal ultrasound and dialysis
Walk-in care clinic
Meal preparation and home delivery

Variation des effectifs de médecins généralistes libéraux et mixtes entre 2007/2015 à l'échelle des bassins de vie



On-call medical coverage

Carte n°2 : Densité des médecins généralistes libéraux et mixtes pour 10 000 habitants - à l'échelle des bassins de vie



Improve and expand the healthcare services offered

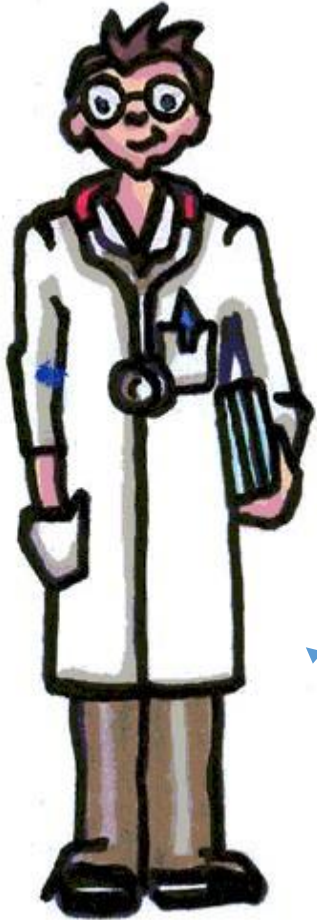
Continuity of care

- Added 7 general practitioners in 3 years
- Created a central healthcare "hub"
- 7 practitioners working as a team through networking
- Close collaboration between the town and the hospital
- Continuous access to unscheduled healthcare services
- Emergency house calls

Continuous access to treatment

- 1 firefighter-physician
- 3 hospital-based EMS physicians
- Medical presence doubled over weekends and summer holiday period
- One summer triage nurse for walk-in patients
- Clear EMS process and sharing of protocols

Imaging on Belle Isle before...

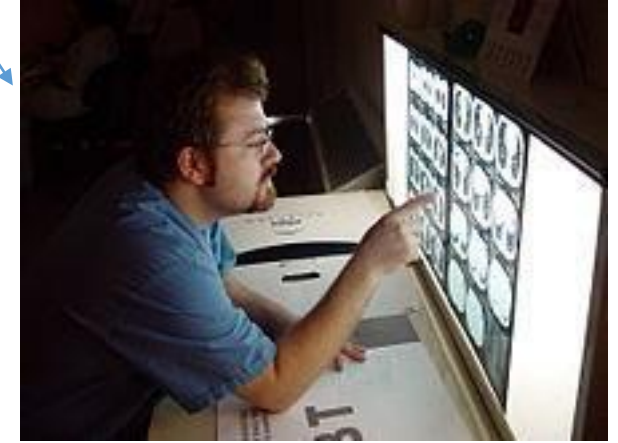


Belle Isle hospital

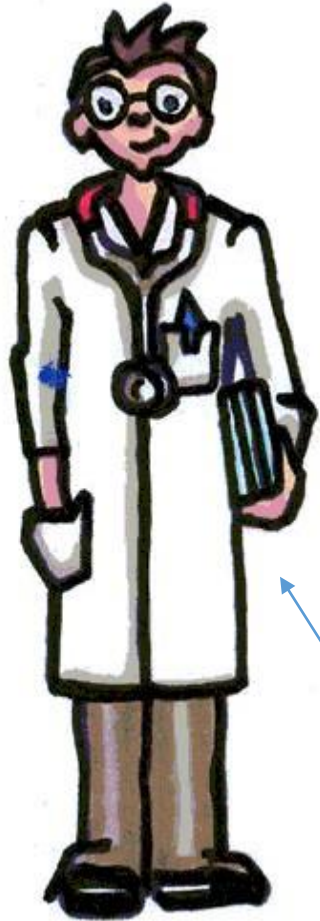


Part-time Employee

Imaging center in Quiberon

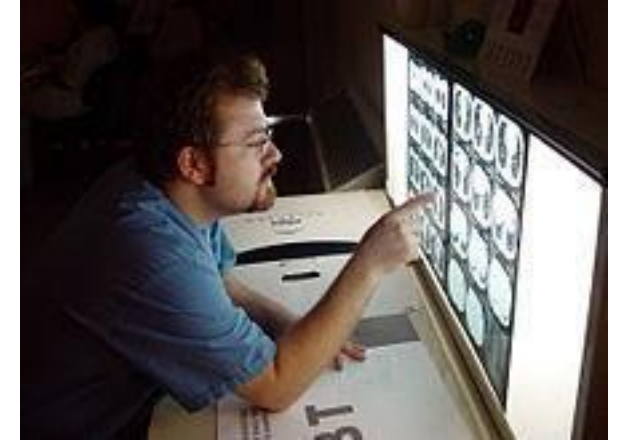


Then, for a few months...



Belle Isle hospital

Imaging center in Quiberon



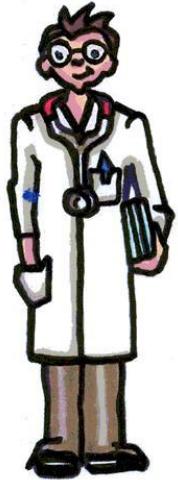
Considerations prior to the change

- Ensure proper healthcare is attainable at the local level
 - *Expand advanced consultations*
- Continue to offer imaging services in collaboration with the Quiberon center
 - *Shared investment and partnership*
- Reduce the number of medical transports and transfers
 - One Belle Isle/Quiberon transfer: €400
 - Needs: 4 ultrasounds prescribed or ability to be prescribed by physicians per day (minimum)

Now: tele-ultrasound imaging

Belle Isle hospital

Lease financing €3200 per month



Imaging center in Quiberon



License fees for procedures performed

Initial findings

- Satisfied users: telephone survey
 - "I was able to get an appointment very fast"
 - "I was able to talk to Dr. Benoit, even though he was far away"
 - "It saved me time ... before, I had to go to the mainland"
 - "It's not stressful at all!"
- Satisfied general practitioners
 - Rapid diagnoses
 - "More comfortable" writing prescriptions

Initial findings

- **Gradual** ramp up
 - Need to stabilize the network
 - Technician started working in March, four days a week
 - Usage is increasing
- Some preliminary figures: **141 ultrasounds in 3 months**
 - 79 pelvic/abdominal ultrasounds
 - 6 abdominal ultrasounds
 - 23 thyroid and neck ultrasounds
 - 2 breast ultrasounds
 - 31 soft tissue ultrasounds (shoulders, feet, biceps)
- Possible use for Ob/Gyns

First 4 months
2015
92 ultrasounds

Recognized cost
2015
Medical transport
€394.00